



***Two for One Twisters***  

---

***For Economy and Reliability***

## ***Four Decades of Reliability***

*Veejay Lakshmi are the leading manufacturer of Two-for-One Twisting machines with more than 6700 machines supplied world wide.*

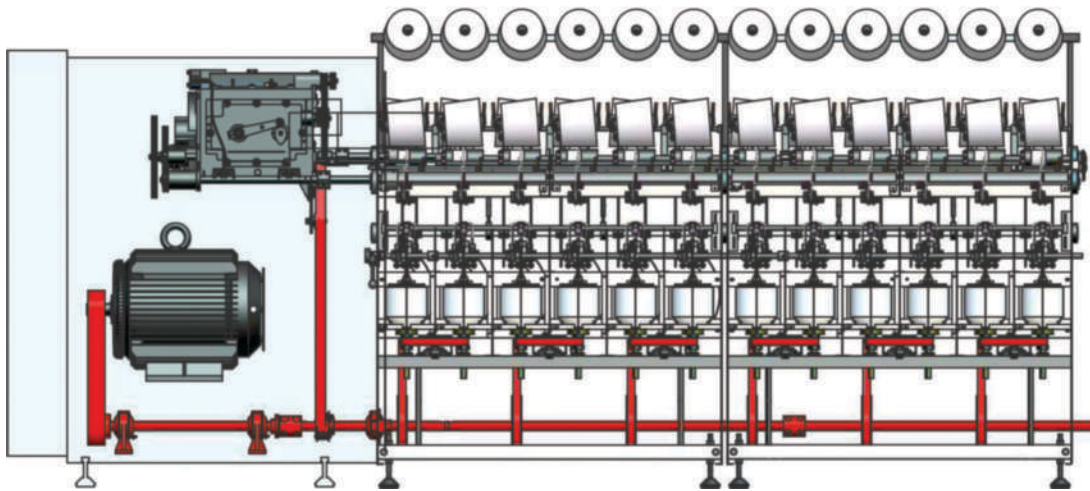
*Wide range of models for every process applications - for fine Voile yarns to Carpet yarns, Industrial yarns and even Jute yarns.*



## ***World wide customer base...***

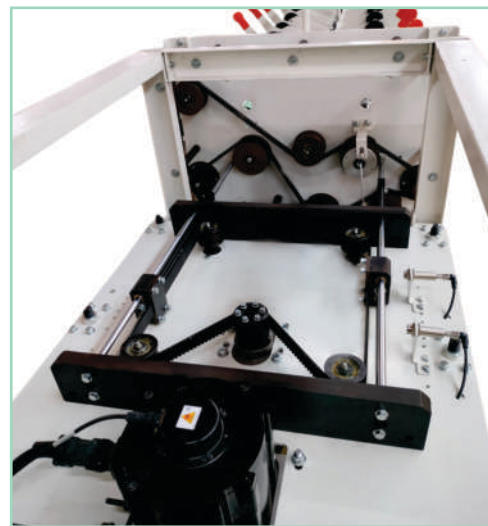
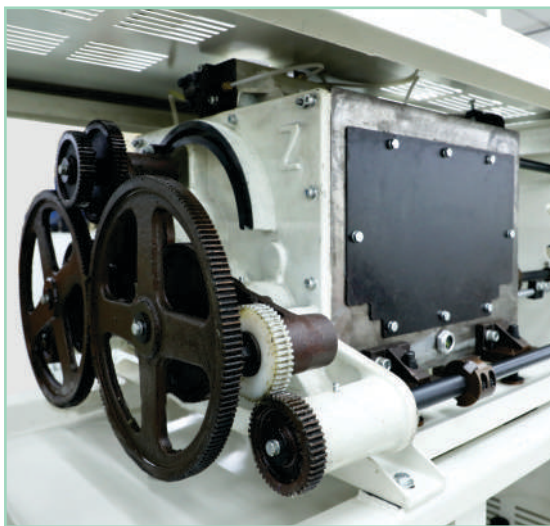
*Satisfied Customers in India, Indonesia, Philippines, Malaysia, Thailand, China, Nepal, Bangladesh, Sri Lanka, Mexico, Turkey, Egypt, Kenya, Uganda, Nigeria etc*





**MECHANICAL DRIVE**

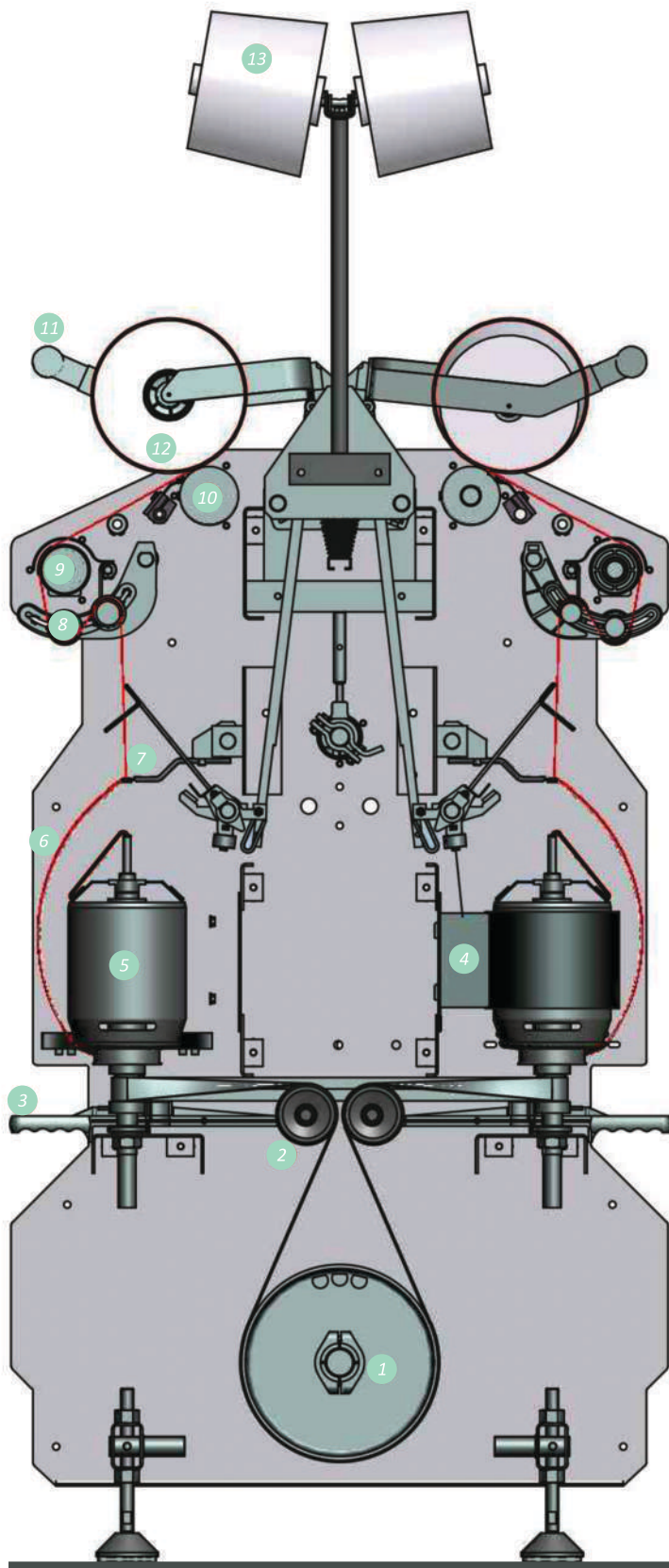
**SERVO DRIVE**



<b>MECHANICAL DRIVE SYSTEM</b>	<b>ELECTRONIC SERVO DRIVE SYSTEM</b>
<ul style="list-style-type: none"> <li>☛ Easy to use mechanical system</li> </ul>	<ul style="list-style-type: none"> <li>☛ Electronically controlled independent motors for spindle drive, takeup and traverse</li> </ul>
<ul style="list-style-type: none"> <li>☛ Wide range of Twist</li> </ul>	<ul style="list-style-type: none"> <li>☛ Machine working parameters set by input through touch screen control panel</li> </ul>
<ul style="list-style-type: none"> <li>☛ Delivery package with 6" traverse</li> </ul>	<ul style="list-style-type: none"> <li>☛ High delivery speeds</li> </ul>
<ul style="list-style-type: none"> <li>☛ Anti patterning device</li> </ul>	<ul style="list-style-type: none"> <li>☛ Electronic anti patterning system</li> </ul>
<ul style="list-style-type: none"> <li>☛ Creeping device for producing Soft package for dyeing</li> </ul>	<ul style="list-style-type: none"> <li>☛ Reduced machine setup time</li> </ul>
<ul style="list-style-type: none"> <li>☛ Option for Inverter drive</li> </ul>	<ul style="list-style-type: none"> <li>☛ Minimum maintenance</li> </ul>

**OPTIONAL EQUIPMENTS**

- ☛ Waxing Device
- ☛ Outer Pot / Ring for Balloon Control
- ☛ Cradle Lifting Arrangement
- ☛ Automatic Drop Wire Arrester
- ☛ Pull Cord Arrangement for Emergency Stop
- ☛ Tower Lamp Arrangement



- 1 Drive Pulley
- 2 Jockey Pulley
- 3 Brake Lever
- 4 Balloon Limitor
- 5 Inner Pot
- 6 Yarn Balloon
- 7 Pigtail Guide
- 8 Guide Roller
- 9 Pre Takeup Roller
- 10 Takeup Roller
- 11 Cradle
- 12 Delivery Package
- 13 Yarn Package

### FOUR SPINDLE DRIVE & BRAKE LEVER SYSTEM



*Proven four spindle drive system for lesser power and ease of operation.*

### CRADLE LIFTING MECHANISM

*When there is an end breakage, take up package is lifted from take up roller by the cradle lifting mechanism. Thus, possible damage to yarn & disturbance of yarn layers, which will affect the subsequent process is avoided.*



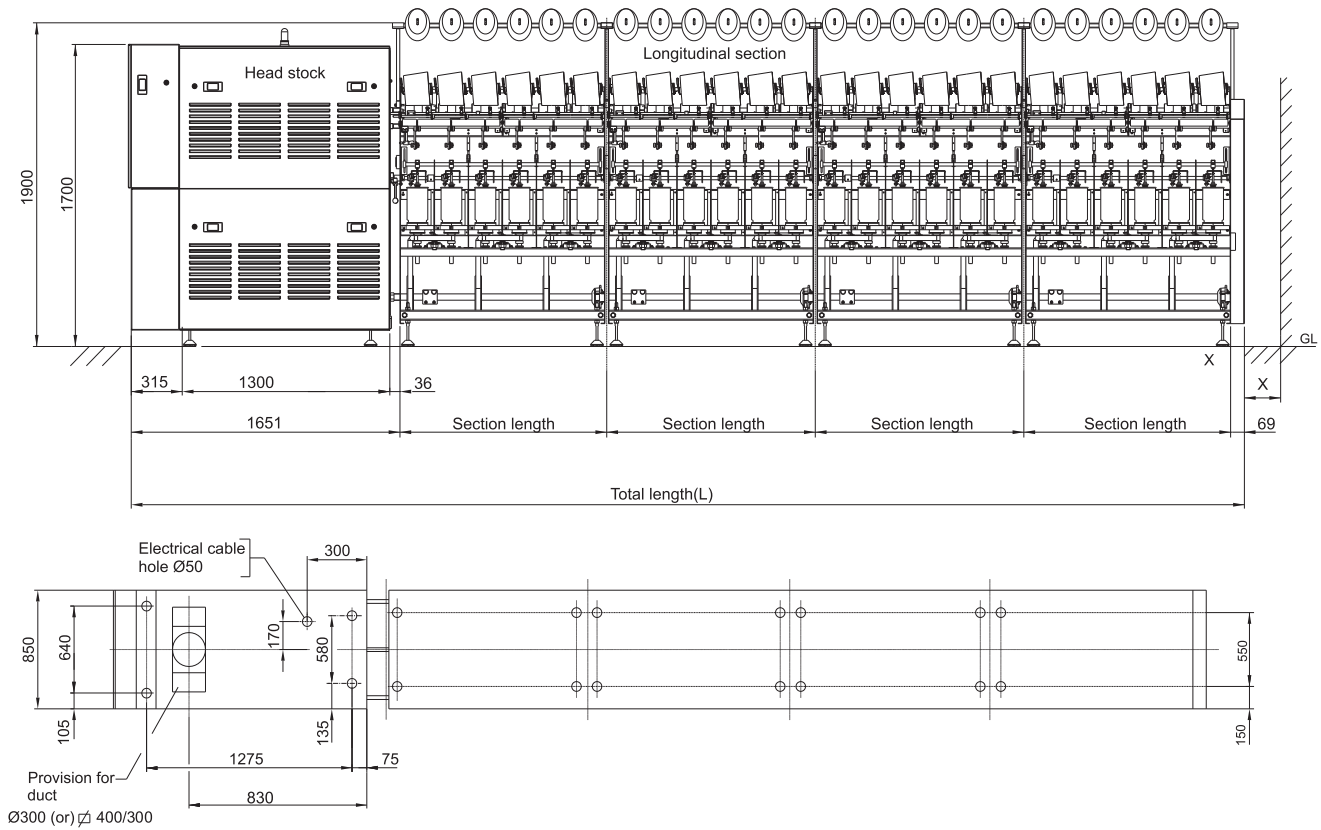
### INVERTER DRIVE PANEL



### AUTOMATIC DROP WIRE ARRESTER



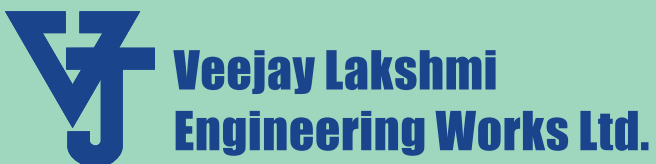
# Technical and Technological Data



Spindle Type		VJ-100-MN		VJ-120-MD		VJ-120-MD2		VJ-150-MN		VJ-150-MD		VJ-190-MN		VJ-190-MW	
Max. No of Spindles / M/c		Upto 300		Upto 300		Upto 300		Upto 240		Upto 240		Upto 192		Upto 144	
No. of Spindles / Section		12		12		12		12		12		12		8	
Gauge		210		210		210		240		240		240		300	
Pot diameter (mm)		105		138		138		149		165		189		189	
Twist range (TPI)		2.5 to 43		2.5 to 43		2.5 to 43		2.5 to 43		2.5 to 43		2.5 to 43		2.5 to 43	
Spindle speed (Mechanical)		Max.14000		Max.14000		Max.14000		Max.12000		Max.10000		Max.9000		Max.9000	
Count Range (Ne)		2/40 to 2/140		2/20 to 2/100		2/20 to 2/40		2/6 to 2/80		2/4 to 2/30		2/2 to 2/20		2/2 to 2/20	
Material		Cotton / Synthetic		Cotton / Synthetic		Cotton / Synthetic		Cotton / Synthetic		Cotton		Cotton		Cotton / Synthetic	
Feed Package	Traverse length (Inch)	6"	8"	6"	8"	6"	8"	6"	8"	6"	8"	6"	8"	6"	8"
	Cheese length (mm)	170	220	170	220	170	220	170	220	170	220	170	220	170	220
	Max. outside dia. (mm)	95		130		130		140		160		180		180	
	Min. inside dia. (mm)	38		38		38		43 38		43 38		43		43	
Conicity	Cheese		Cheese		Cheese		Cheese		Cheese		Cheese		Cheese		
Delivery Package	Traverse (mm)	152		152		152		152		152		152		152	
	Package Length (mm)	170		170		170		170		170		170		170	
	Conicity	0°0', 3°30', 4°20" & 5°57"		0°0', 3°30', 4°20" & 5°57"		0°0', 3°30', 4°20" & 5°57"		0°0', 3°30', 4°20" & 5°57"		0°0', 3°30', 4°20" & 5°57"		0°0', 3°30', 4°20" & 5°57"		0°0', 3°30', 4°20" & 5°57"	
	Max. dia. (mm)	ø upto 300 mm		ø upto 300 mm		ø upto 300 mm		ø upto 300 mm		ø upto 300 mm		ø upto 300 mm		ø upto 300 mm	
Estimated Weight (gms)	upto 3500		upto 3500		upto 3500		upto 3500		upto 3500		upto 3500		upto 3500		

## MACHINE LENGTH :

No. of Section	1	2	3	4	5	6	7	8	9	10	11	12	13	14	15	16	17	18	19	20
Gauge : 210 mm	12	24	36	48	60	72	84	96	108	120	132	144	156	168	180	192	204	216	228	240
Total Length L (mm)	3008	4296	5584	6872	8160	9448	10736	12024	13312	14600	15888	17176	18464	19752	21040	22328	23616	24904	26192	27480
Gauge:240mm	12	24	36	48	60	72	84	96	108	120	132	144	156	168	180	192	204	216	-	-
Total Length L (mm)	3188	4656	6124	7592	9060	10528	11996	13464	14932	16400	17868	19336	20804	22272	23740	25208	26676	28144	-	-
Gauge : 300 mm	8	16	24	32	40	48	56	64	72	80	88	96	104	112	120	128	136	-	-	-
Total Length L (mm)	2948	4176	5404	6632	7860	9088	10316	11544	12772	14000	15228	16456	17684	18912	20140	21368	22596	-	-	-



*Sengalipalayam, NGGO Colony (Post)*  
*Coimbatore - 641 022, INDIA*  
*Mobile : 73730 45125, 63799 05173, 63799 05174*  
*E-mail: [sales@veejaylakshmi.com](mailto:sales@veejaylakshmi.com)*  
*[www.veejaylakshmi.com](http://www.veejaylakshmi.com)*